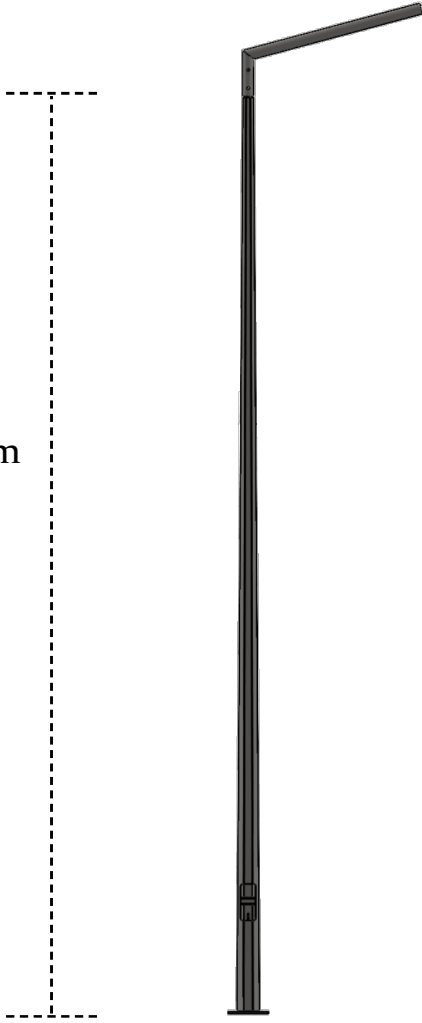


Poligonal Konik Aydınlatma Direkleri

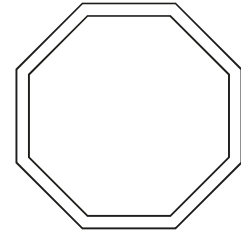
Polygonal Conical Lighting Poles

3m to 15m
Height



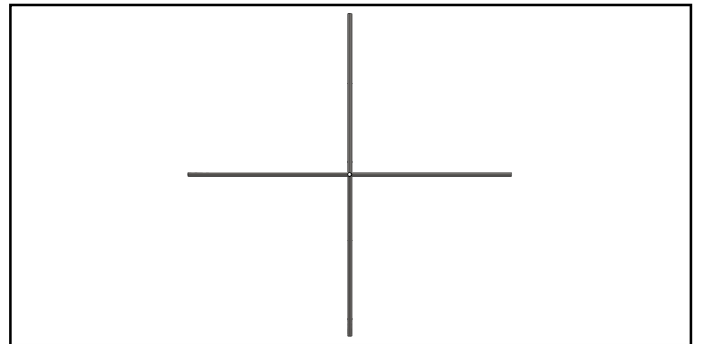
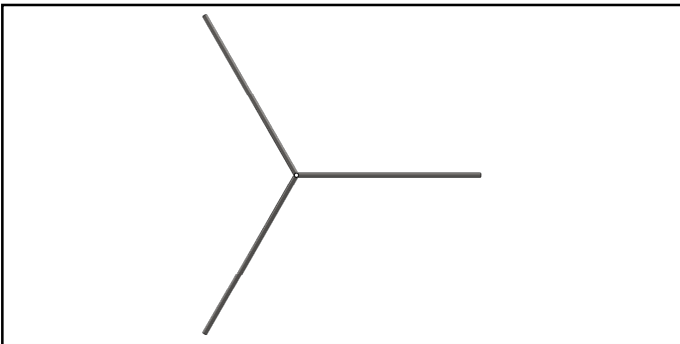
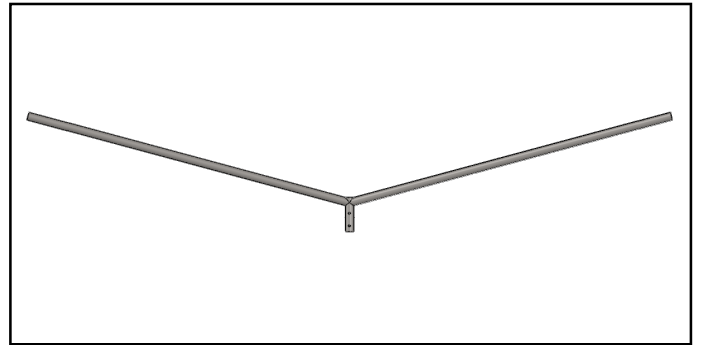
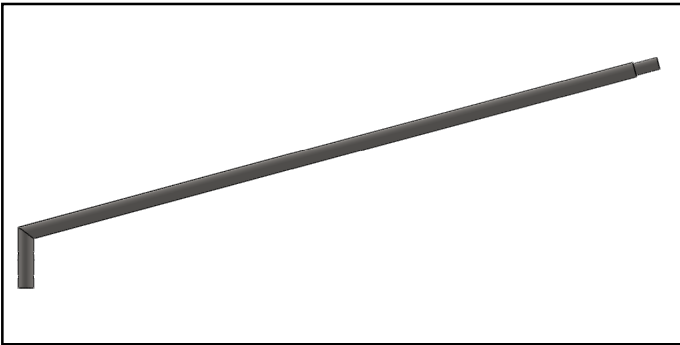
Technical Specification

Material	S235JR
Type	Polygonal Conical
Height	3 to 15 meters
Arm Configuration	1, 2, 3 and 4 arms
Baseplate	Square or Round
Coating	Hot-Dip Galvanization Electrostatic Powder Coating
Anchor Bolt	J-type, L-Type, I-Type

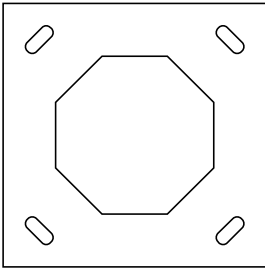


Thickness
From 2,0mm to 6,0mm

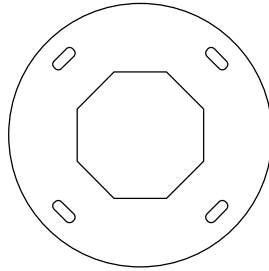
Arm Configuration



Baseplate Configuration



Square



Round

Anchor Bolt Configuration



J-Type



L-Type



I-Type



The exact dimensions will be calculated and determined after the Statical Analysis of the Pole.